

Installing uPVC Cladding

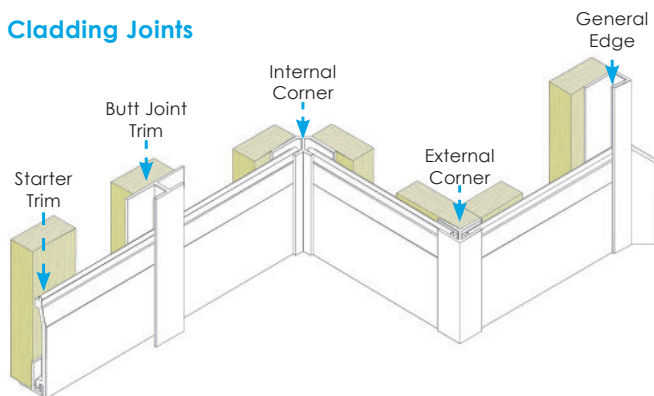
HOMELINE
BUILDING PRODUCTS

Before you start installing the uPVC Cladding

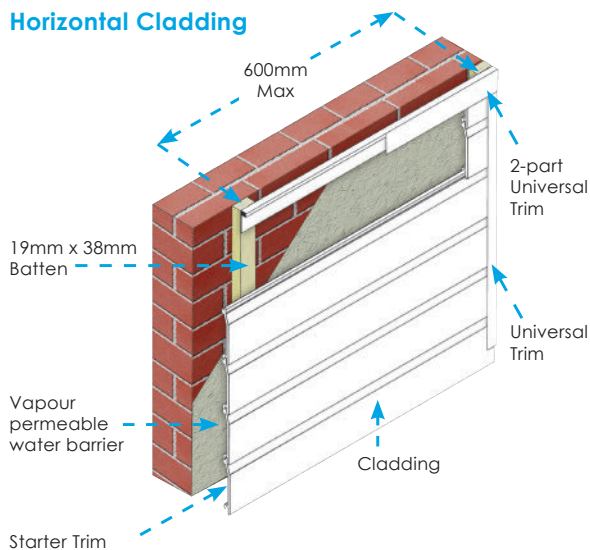
Please follow the instructions below before you start installing your brand new uPVC Cladding.

- Firstly and most importantly, please ensure all Health & Safety guidelines are followed – we don't want you having an accident whilst replacing your uPVC Cladding.
 - It is critical that all product should be stored on a flat surface out of direct sunlight prior to fitting and should not be fitted when the ambient temperature is below 5 Deg C or above 25 Deg C
- Homeline recommends that our uPVC cladding be installed over a timber stud frame or over a masonry or block substrate and should be fixed to a preserved treated timber batten minimum size 38mm x 25mm
- Cladding fixing points should be no further apart than 600mm for White Cladding, and 400mm for Woodgrain or coloured Cladding making sure that the ends of boards are secured also.
 - For white cladding ensure that every length fitted has an expansion gap of 5mm on both sides, this will give a total gap of 10mm at any butt joint.
 - For coloured or foiled cladding ensure that every length fitted has an expansion gap of 8mm on both sides, this will give a total gap of 16mm at any butt joint.
- Installation begins by fixing trims (2 part U- Channel Cladding Trim G2UCW or Cladding U – Trim GUCW) around the area of which you wish to clad, for 90 degree corners please use 2 Part External Corner Trim G2ECW.
- Shiplap Cladding is fixed using stainless steel cladding pins (GCP30) positioned along the groove (datum line) which runs the entire length of the uPVC cladding.
- Pinning the shiplap cladding should take place from the centre of the boards working outwards. Subsequent lengths are fitted over the preceding length ensuring the tongue and groove joint is located and the cladding pin heads are concealed by the overlap. allow for 5mm expansion gaps for white and 8mm for foiled or coloured boards at each end, either vertically or horizontally.
- Homeline Shiplap Cladding is supplied in 5m lengths, to join lengths please use either Shiplap Cladding 150mm Joint Covers GSJ150W or Cladding Centre Joint Trim GCJW. Where the installation is south facing it is recommended that the length of cladding be reduced to 2.5 Mtrs long (while keeping the expansion clearances as above) will compensate for the potential exposure to sunlight.

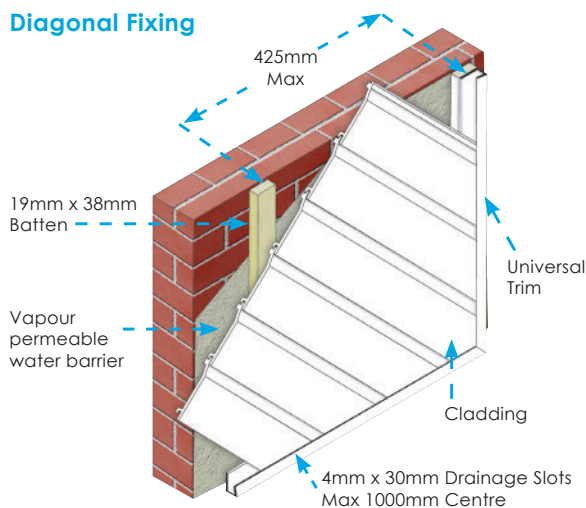
Cladding Joints



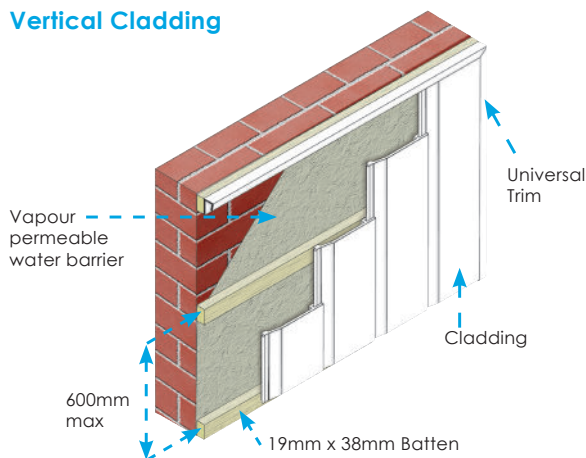
Horizontal Cladding



Diagonal Fixing



Vertical Cladding



Homeline Building Products Ltd

Partnership Way, Shadsworth Business Park, Blackburn, BB1 2QP

T: 01254 286 085 W: www.homeline.uk.com